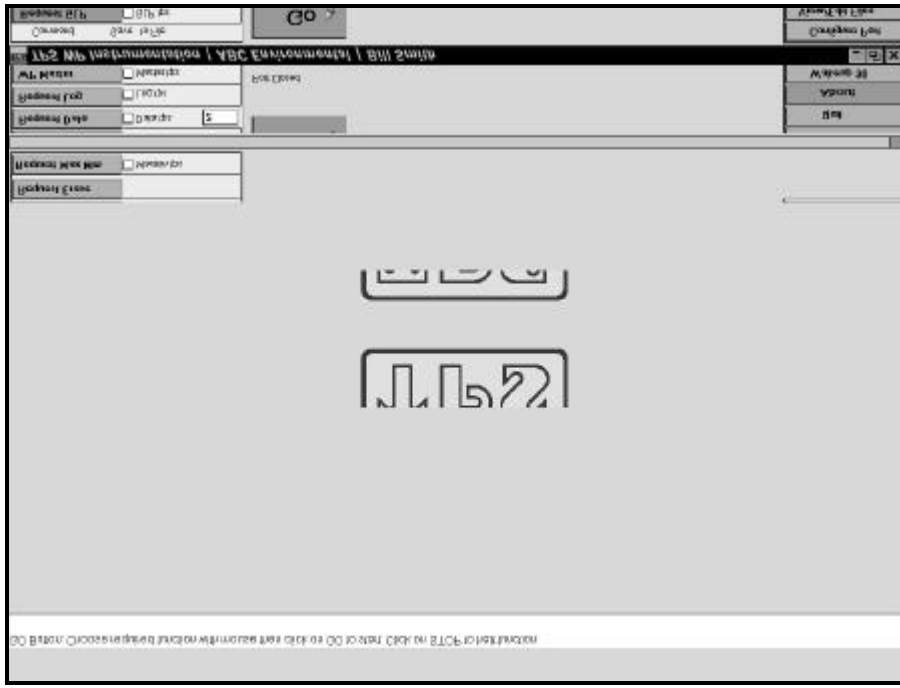


TPS WP Series Instrumentation Software



1. Installation

Windows 95

1. Click on the **Start** button.
2. Select **Run...**
3. Type in **A:SETUP.EXE** and click **OK**.
4. Follow the prompts in the setup procedure. We recommend that you select the default directory, TPSWP.

Windows 3.0 and Windows 3.1

1. Click on **File** in the Program Manager.
2. Select **Run...**
3. Type in **A:SETUP** and click **OK**.
4. Follow the prompts in the setup procedure. We recommend that you select the default directory, TPSWP.

Files in this installation

TPSWP.EXE

TPSWP.ACS

TPSWP.WPS

Plus DLL and other library support files.

2. Launching the WP Series Software

Windows 95

1. Click on **Start**
2. Select **Programs**.
3. Select the **TPS WP Software** icon

Windows 3.0 & 3.1

1. Double-click on the **TPS WP Instrumentation** program group
2. Double-click on the **TPS WP Instrumentation** icon.

3. Selecting and running functions from the menu

To select a function on the menu, click on it with the mouse. The button will then change from blue to green, and the text will become larger to indicate that it is the active function. The "TAB" and "Shift TAB" key may also be used to select functions from the menu.

After selecting a function from the menu, click on the green **GO** button to start. The **GO** button is now replaced by a red **STOP** button. Click on **STOP** at any time to halt the function.

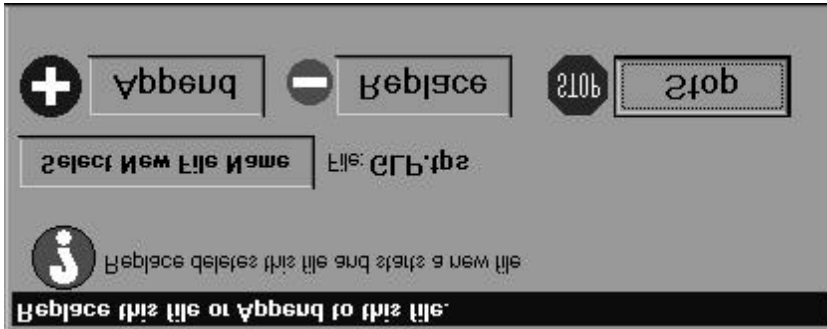
The WP instrument's status information is displayed beneath the **GO/STOP** button. This information includes the model name, firmware version, serial number and number of readings logged in memory. This information is updated at the end of every communication function.

4. Saving data to disk

The data collected by any of the communication functions is always displayed on the screen. To also save the data to disk, click on the check box before running the function.

The default file name is shown next to the check box. To change the file name, first click on **GO**. The computer will now ask if you wish to select a new file name, append the existing file, replace the existing file or stop the function entirely (see diagram, below).

The procedure for loading data into an EXCEL spreadsheet is in the file EXCEL.TXT supplied in the distribution. It is in the TPSWP Folder. Read this file with Notepad.



5. Set-up Functions

Configure Port

Select **Configure Port** to choose the baud rate and the RS232 port to which the instrument is attached. The baud rate must match the baud rate to which the WP instrument is set. The default value is the fastest rate of 9600. Slower rates may be required if a long cable is being used. The default RS232 port is COM2.

View/Edit Files

Selecting this function allows you to view and edit any of the data files that have been saved to disk. The default filter is for files with a “.tps” extension in the “c:\tpswp” directory. Files are opened using the Notepad function supplied with windows.

WARNING : Do not open a file if one of the communication functions is still writing to it. This will cause loss of data when the file is subsequently saved.

Quit

Select this function to leave the TPS WP Instrumentation program.

About

Select the **About** function to display information about the software package. This function also allows you to fill in the registration information. The registration information is located in the file “tpswp.acs”. If this file is accidentally deleted, it can be re-created by going through the registration again.

6. Communication Functions

Request GLP

Select **Request GLP** and click on **GO** to download all calibration GLP information, plus the instrument model, serial number and current date and time. The program automatically stops when downloading is complete.

Request Data

Requests the currently displayed data from the WP instrument at intervals that you can specify. To specify the number of seconds between data requests, enter a value from 0.2 to 86,400 (24 hours) into the box.

Click on **GO** to start requesting data from the WP instrument. The number of seconds to the next reading counts down beneath the **GO/STOP** button. Click on **STOP** to halt this function at any time.

Request Log

Select **Request Log** and click on **GO** to download the logged readings stored in the WP instrument's memory.

WP Master

Select **WP Master** to allow the WP instrument to control when data is sent to the computer. Click on **GO**, and the program will now wait for data to be sent from the WP instrument. This data can be sent by using the instrument's function to instantly transmit readings, to log directly to the RS232 port and to send logged data to the RS232 port. See the instrument's handbook.

Request Erase

Select **Request Erase** to erase all of the logged readings from the WP instrument's memory. Click **GO** to start. The computer will now ask you to confirm that you really do wish to erase the instrument's memory. Click on **Yes** to erase or **No** to abort.

Wakeup 90

Click on this function if you have a TPS 90 Series instrument connected to the computer, and you wish to switch it on remotely.

Request Max Min

This function is applicable only to the WP-87.

Select **Request Max Min** and click on Go to download the Maximum and Minimum temperature data stored in the WP-87's memory.

7. Help Line File

The help line that appears at the bottom of the screen as the mouse points to the various functions is in the file "tpswp.wps" in the "c:\tpswp" directory. Each line in this file may be edited to your requirements. It must be edited in a text editor such as the **Notepad** function supplied with Windows.

The colour of the text in the help line can also be set individually for each line, to your requirements. The first number in each line defines the colour. This is followed by a comma, and then the help line text. ***This formatting must be preserved.***

The colour codes are defined as follows:

0 Black	4 Red	8 Grey	12 Light Red
1 Blue	5 Magenta	9 Light Blue	13 Light Magenta
2 Green	6 Yellow	10 Light Green	14 Light Yellow
3 Cyan	7 White	11 Light Cyan	15 Bright White

This program has been written for use with all TPS WP Series instruments. It can also be used with the TPS 90 Series field loggers, although this software package does not utilise all of the abilities of the 90 series.

Modifications and enhancements will be undertaken willingly. Please advise us of your requirements, for a complete quotation.

TPSWP Version 1.1 Copyright © 1998 Crolltronics Pty Ltd

TPS Pty Ltd
4 Jamberoo Street,
Springwood, Brisbane,
AUSTRALIA, 4127.

Phone : Australia (07) 32 900 400
International 61 7 32 900 400

Fax : Australia (07) 3808 4871
International 61 7 3808 4871

Email : tps@tpssite.com.au

Web Page : www.tpssite.com.au